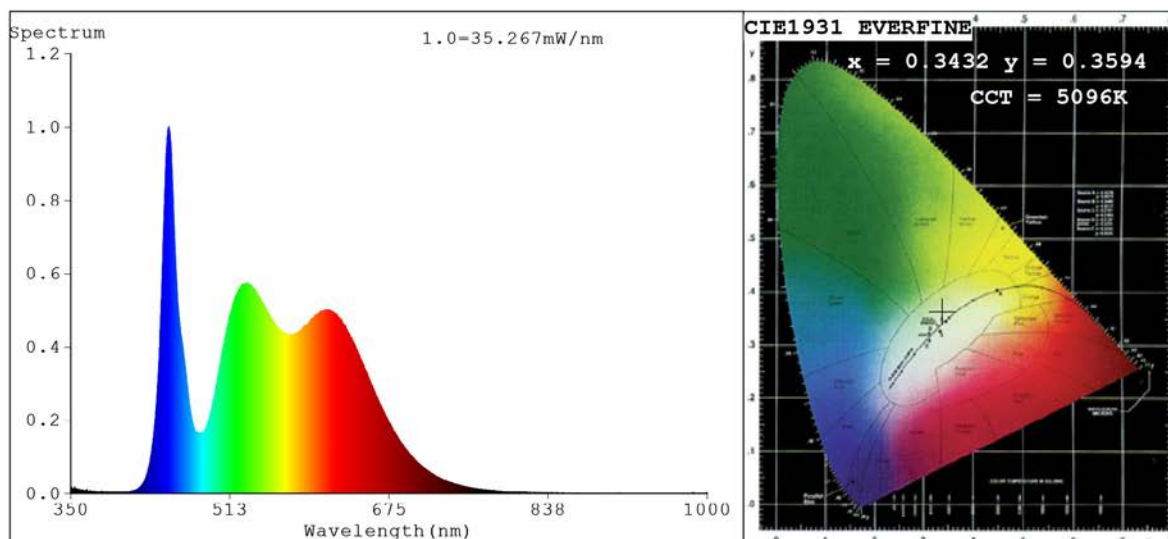


Spectrum Test Report



Color Parameters:

Chromaticity Coordinate: $x=0.3432$ $y=0.3594$ $u'=0.2072$ $v'=0.4881$
 CCT=5096K (Duv=0.0046) Dominant WL:Ld =567.2nm Purity=10.8%
 Ratio:R=17.2% G=78.7% B=4.0%;;Peak WL:Lp=450.2nm FWHM=17.8nm
 Render Index:Ra=90.5 CRI=85.9 TM30:Rf=89 Rg=101
 R1 =94 R2 =91 R3 =86 R4 =91 R5 =92 R6 =88 R7 =93
 R8 =89 R9 =64 R10=76 R11=89 R12=63 R13=93 R14=92 R15=91

Photo Parameters:

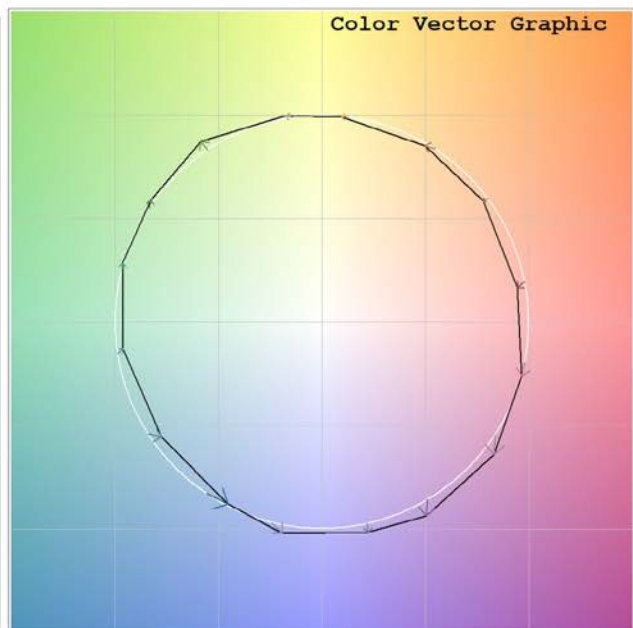
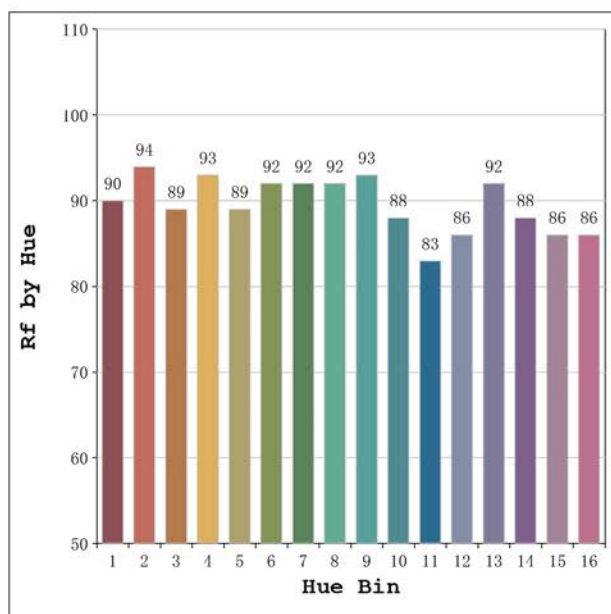
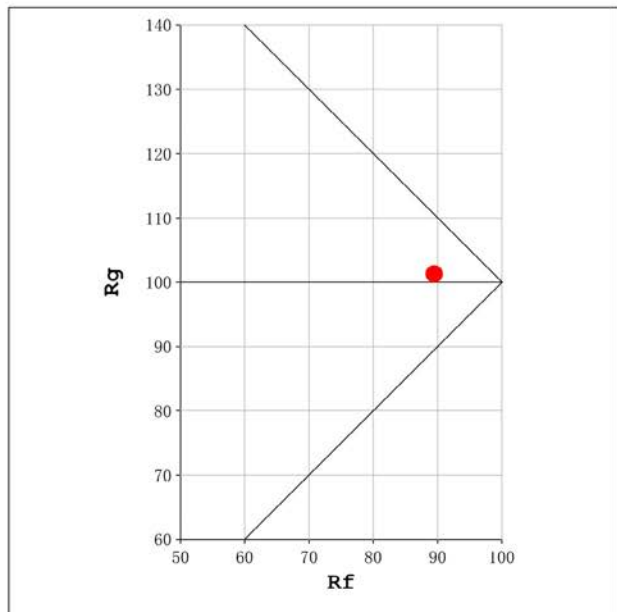
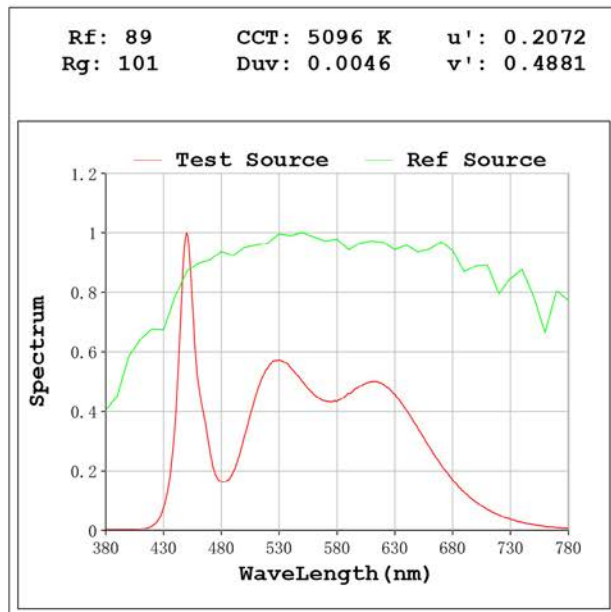
Flux = 1204 lm Eff. : 109.29 lm/W Fe = 3.942 W

Electrical parameters:

V = 23.998 V I = 0.4589 A P = 11.01 W PF = 1.000

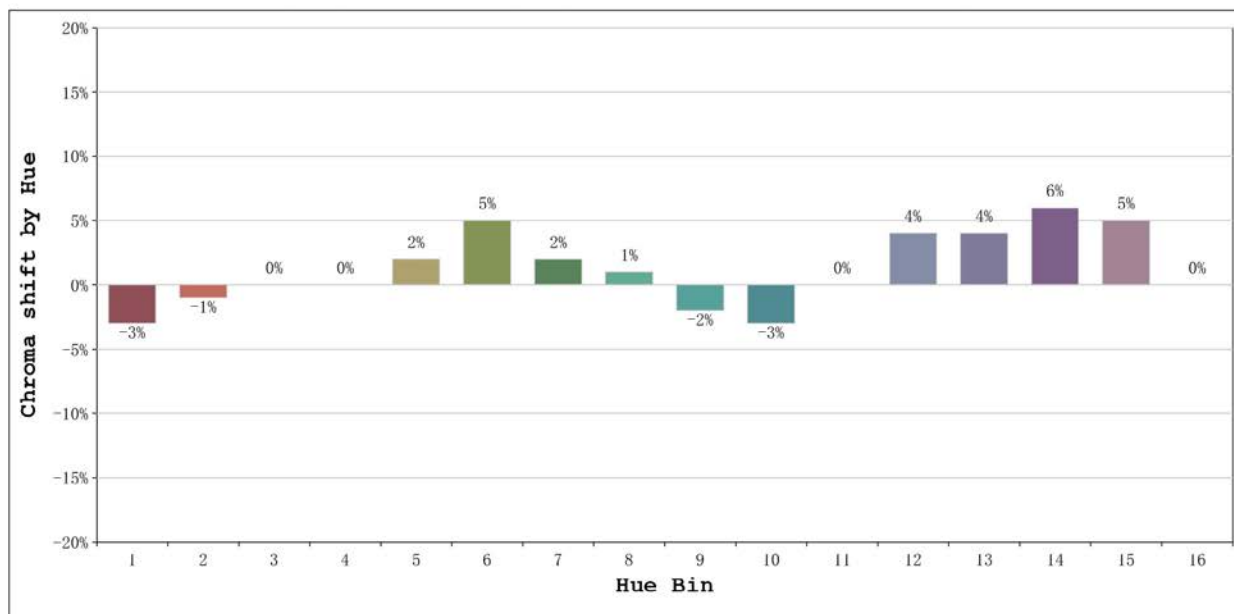
Status: Integral T = 1000 ms Ip = 44441 (68%)

Model:Ecoled Élite 10 Gold 5000	Number: 31.166
Tester:Sergio Carneros	Date:2025-02-12 13:45:23
Temperature:20Deg	Humidity:50%
Manufacturer:Luz Negra	Remarks:100cm de tira flexible



Model:Ecoled Élite 10 Gold 5000
 Tester:Sergio Carneros
 Temperature:20Deg
 Manufacturer:Luz Negra

Number: 31.166
 Date:2025-02-12 13:45:23
 Humidity:50%
 Remarks:100cm de tira flexible



			Graphic shift(%)	
Hue Bin	Hue Angle	Rf	Chroma	Hue
1	0.0° - 22.5°	90	-3	-1
2	22.5° - 45.0°	94	-1	0
3	45.0° - 67.5°	89	0	5
4	67.5° - 90.0°	93	0	3
5	90.0° - 112.5°	89	2	3
6	112.5° - 135.0°	92	5	1
7	135.0° - 157.5°	92	2	-3
8	157.5° - 180.0°	92	1	-3
9	180.0° - 202.5°	93	-2	-1
10	202.5° - 225.0°	88	-3	5
11	225.0° - 247.5°	83	0	11
12	247.5° - 270.0°	86	4	6
13	270.0° - 292.5°	92	4	0
14	292.5° - 315.0°	88	6	-4
15	315.0° - 337.5°	86	5	-7
16	337.5° - 360.0°	86	0	-6

Model:Ecoled Élite 10 Gold 5000 Number: 31.166
 Tester:Sergio Carneros Date:2025-02-12 13:45:23
 Temperature:20Deg Humidity:50%
 Manufacturer:Luz Negra Remarks:100cm de tira flexible